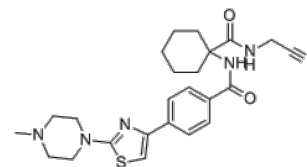


Product Name : L-006235
Cat. No. : PC-60641
CAS No. : 294623-49-7
Molecular Formula : C₂₄H₃₀N₆O₂S
Molecular Weight : 466.6
Target : Cathepsin
Solubility : 100 mM in DMSO



Biological Activity

L-006235 (L-235, CRA-013783) is a potent, selective, orally bioavailable **cathepsin K** inhibitor with IC₅₀ of 0.25 nM, displays >4,000-fold selectivity over cathepsins B, L and S.

L-006235 exhibits an IC₅₀ of 28 nM at cellular level in human osteoclasts, >1,000-fold selectivity against cathepsin S.

L-006235 reduces bone erosion, cartilage degradation and inflammation evoked by collagen-induced arthritis in mice.

References

Palmer JT, et al. *J Med Chem.* 2005 Dec 1;48(24):7520-34.

Falgueyret JP, et al. *J Med Chem.* 2005 Dec 1;48(24):7535-43.

Svelander L, et al. *Eur J Pharmacol.* 2009 Jun 24;613(1-3):155-62.

Hayami T, et al. *Bone.* 2012 Jun;50(6):1250-9.

Caution: Product has not been fully validated for medical applications. Lab Use Only!

E-mail: tech@probechem.com